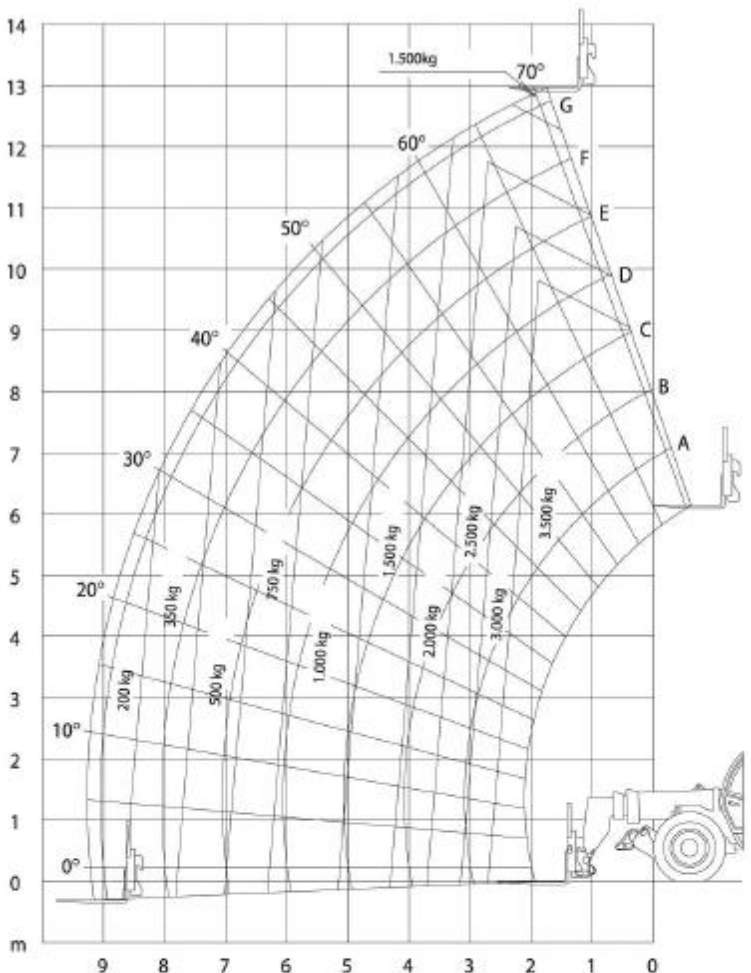


JLG 3513



General	
Rated Capacity @ 500mm Load Center	3500kg
Maximum Lift Height	13.00m
Capacity @ Maximum Lift Height	3500kg
Maximum Reach	9.20m
Capacity @ Maximum Reach	1000kg
Approximate Operating Weight	11000kg
Length (Less Forks)	6.00m
Width	2.38m
Height	2.45m
Wheelbase	2.85m
Outside Turning Radius	3.80m
Ground Clearance	0.42m
Drive	4x4
Engine	Perkins 1104D-44T
kW @ RPM	74.5kW @ 2200rpm
Transmission	Powershift
Axle-Front	High Bias, Limited Slip
Axle-Rear	Planetary
Steering	All Wheel
Tires	405/70-24 14PR
Maximum Travel Speed	35kph
Frame Tilt Left/Right	±9 Degrees



Dimensions

- A. Overall Height2.45 m
- B. Overall Width2.38 m
- C. Width of Cab0.89 m
- D. Track width1.92 m
- E. Wheelbase2.85 m
- F. Length at front wheels4.60 m
- G. Length at fork-holder plate6.00 m
- H. Ground Clearance0.42 m
- I. Turning radius over tyres3.80 m
- J. Turning radius at fork5.35 m
- Gross Vehicle Weight 11,000 kg

