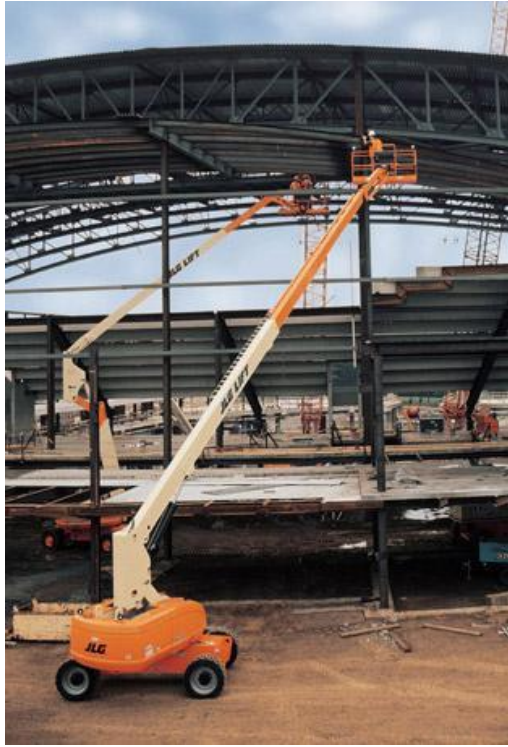


## JLG 860SJ



### Chassis

<b>Drive Speed 2WD/4WD</b>	<b>3.5 mph / 5.6 kmph</b>
<b>Gradeability 2WD</b>	<b>30%</b>
<b>Gradeability 4WD</b>	<b>45%</b>
<b>Turning Radius (Inside)</b>	<b>12' / 3.66 m</b>
<b>Turning Radius (Outside)</b>	<b>22' 6" / 6.86 m</b>
<b>Axle Oscillation</b>	<b>8" / 20 cm</b>
<b>Tire Size</b>	<b>15-625</b>
<b>Tire Type</b>	<b>Pneumatic</b>

### Reach Specifications

<b>Platform Height</b>	<b>86' / 26.21 m</b>
<b>Horizontal Outreach</b>	<b>75' / 22.86 m</b>
<b>Swing</b>	<b>360° Continuous</b>
<b>Platform Capacity-Restricted</b>	<b>750 lb / 340 kg</b>
<b>Platform Capacity-Unrestricted</b>	<b>500 lb / 227 kg</b>
<b>Platform Rotator</b>	<b>180° Hydraulic</b>
<b>Jib (Range of Articulation)</b>	<b>6' 130° (+70, -60) / 1.83 m 130° (+70, -60)</b>

### Dimensions

<b>Platform Size</b>	<b>36 x 96" / 0.91 x 2.44 m</b>
<b>Overall Width (Axles Retracted)</b>	<b>8' 2" / 2.49 m</b>
<b>Tailswing</b>	<b>4' 8" / 1.42 m</b>
<b>Stowed Height</b>	<b>10' / 3.05 m</b>
<b>Stowed Length</b>	<b>40' / 12.19 m</b>
<b>Wheelbase</b>	<b>10' / 3.05 m</b>

<b>Ground Clearance</b>	<b>12" / 30 cm</b>
<b>Weight*</b>	<b>36,400 lb / 16,511 kg</b>
<b>Max. Ground Bearing Pressure**</b>	<b>81 psi / 5.69 kg/cm<sup>2</sup></b>

<b>Power Source</b>	
<b>Dual Fuel Engine</b>	<b>GM Vortec 3000 MPFI 82 hp / 61 kW</b>
<b>Diesel Engine</b>	<b>Deutz D2011L04 w/ EGR 64 hp/47 kW - Caterpillar 3044C 63.3 hp / 47.2 kW</b>
<b>Fuel Tank Capacity</b>	<b>31 gal. / 117.35 L</b>
<b>Hydraulic Reservoir</b>	<b>48 gal. / 181.7 L</b>
<b>Auxiliary Power</b>	<b>12V DC</b>
<b>Noise Level</b>	<b>70 dBa @ 7 meters</b>

- Available Options**
- **Light Package**
  - **Tow Package**
  - **36 x 72" (0.91 x 1.83 m) Platform**
  - **36 x 96" (0.91 x 2.44 m) Fall Arrest Platform - Rear Entry**
  - **Cold Weather Start Kit**
  - **Arctic Package**

