

MANITOU 2540 MRT




MRT 2540 **PRIVILEGE**


 **Lift capacity** (on stabilisers)4000 kg
at 500 mm from forks heels


 **Lift height** :24.60 m

 **Tyres**
18 - 22,5


 **Forks** (mm)
Length.....1200
Width x thickness.....150 X 50


 **Multidisc brakes** : hydraulically assisted on both axles
Negative parking brake

 **Engine Mercedes-Benz**
TypeOM 904 LA (EURO 3)
Capacity.....4 cyl. 4250 cm³
Power (ISO/TR 14396).....150 HP/110 kw
580 Nm of 1200 at 1600 rpm
Water cooling
Direct injection

 **Transmission**hydrostatic
With automatic power regulation (hydraulic variable displacement pump and motor)
Reversing shiftelectromagnetic
2 speed forward and reverse
Travel speed36 km/h*
*This speed may be limited by local regulations

 **Rear axle**
Frame levelling on front axle +/- 8° (15%)
Automatic rear axle locking system
over 15° rotation


 **4 stabilizers**
simultaneous or individually controlled

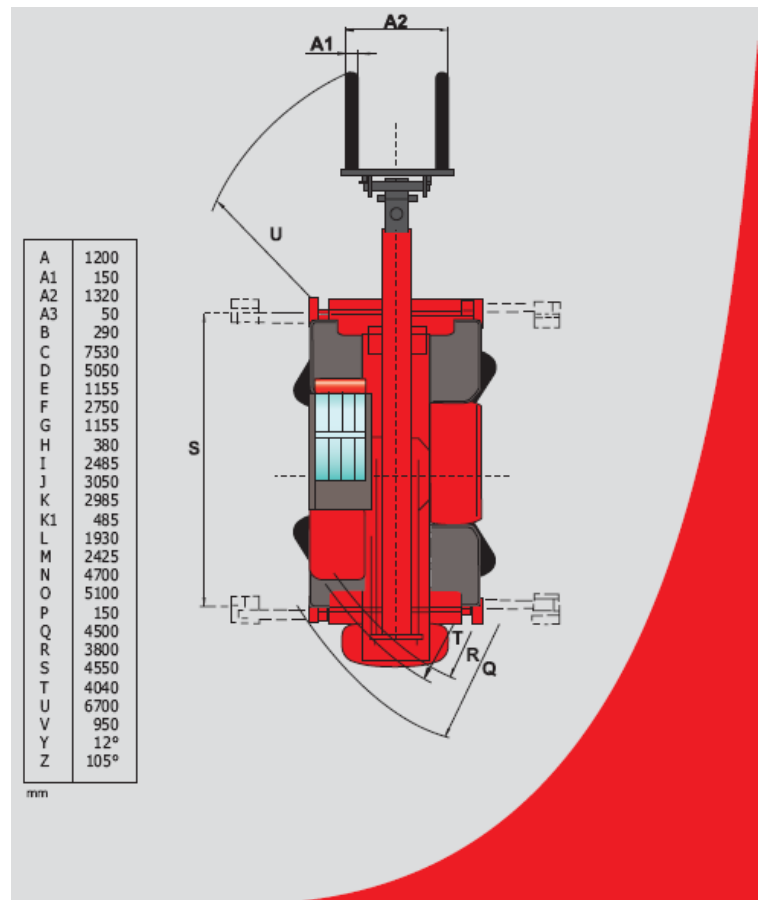
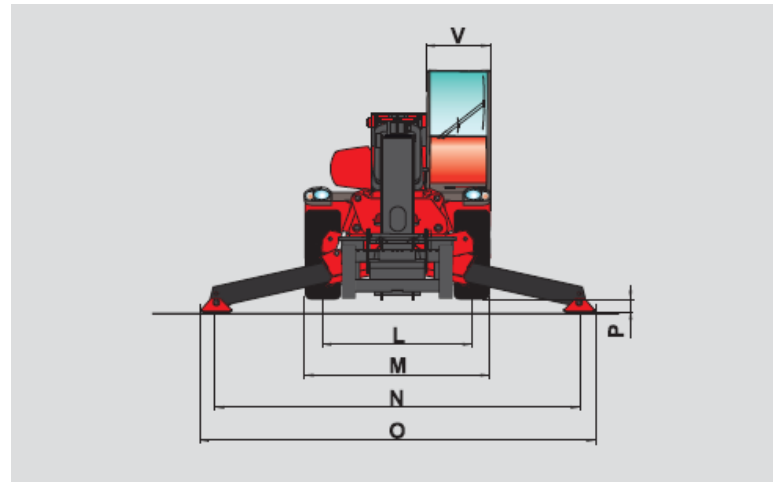
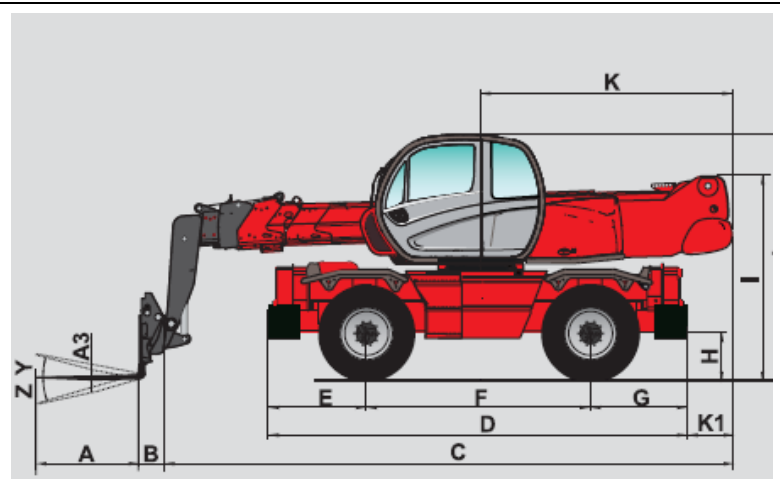
 **Total and continuous rotation**
Turret mounted on a double slew ring
Hydraulic and electric rotation

 **Hydraulics**
3 pumps gear type270 bars/160 l/mn

 **Control** : 2 electro proportional control joysticks for all hydraulic movements

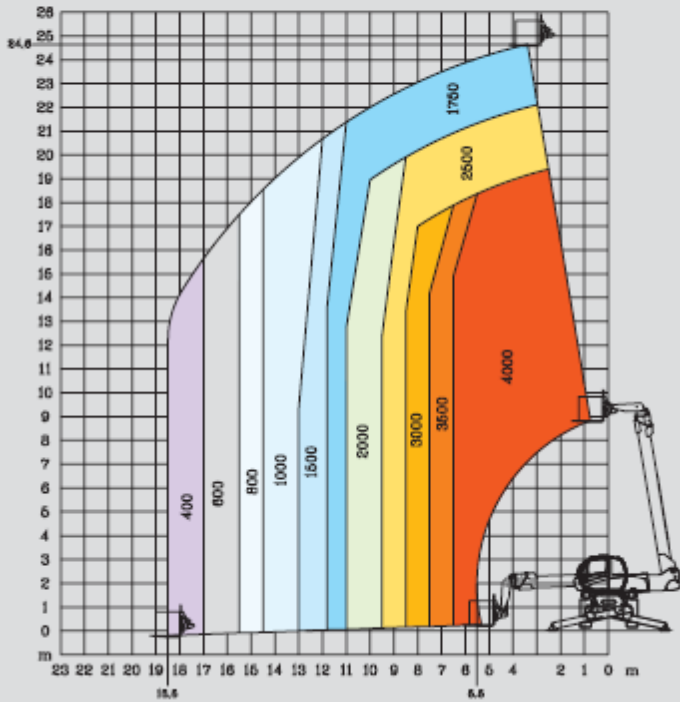
 **Capacities**
Cooling system.....18 l.
Engine oil15 l.
Hydraulic oil200 l.
Fuel tank230 l.

 **Weight unladen** (with forks)17165 kg
Overall width.....2.43 m
Overall height3.05 m
Overall length7.82 m
Ground clearance0.37 m
Drawbar pull.....8200 daN

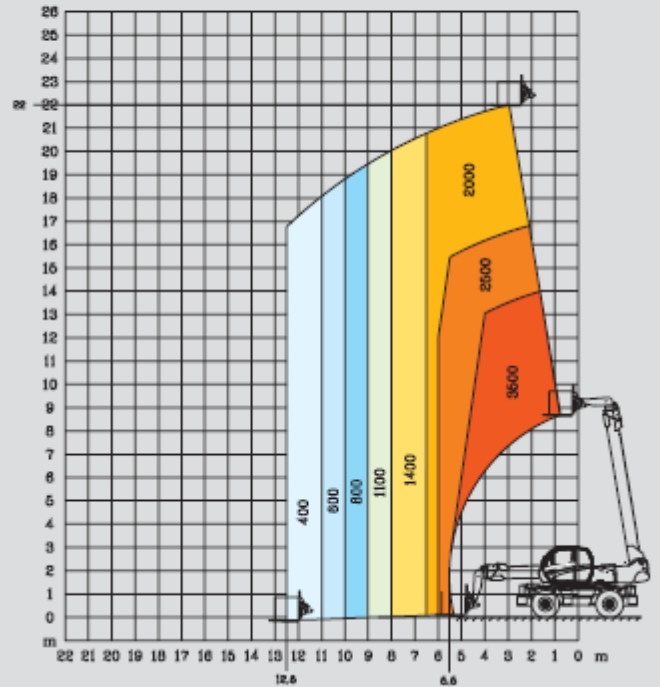


 **MANITOU**

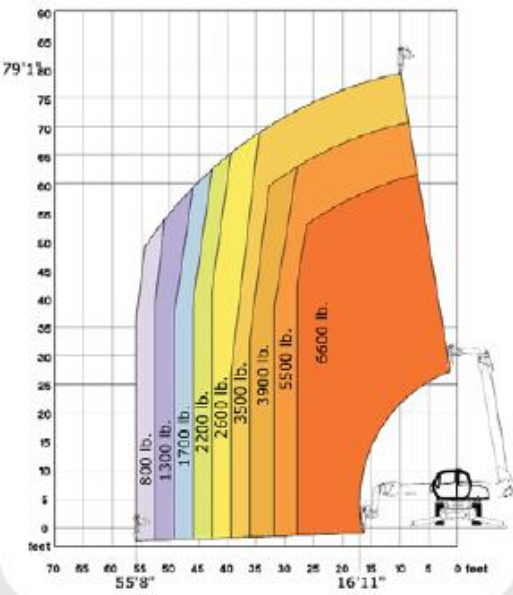
ROTATION ON STABILISERS FULLY EXTENDED WITH FORKS



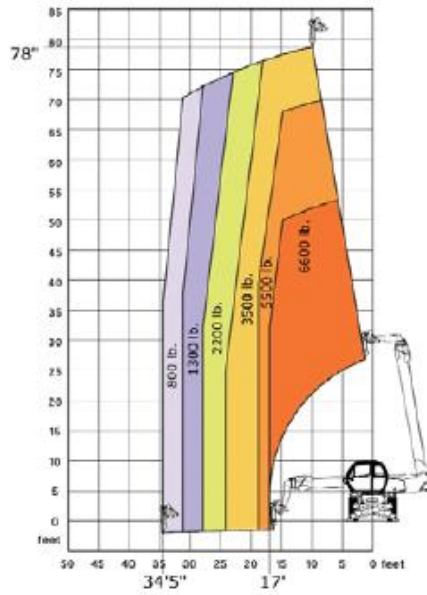
FRONTAL POSITION ON WHEELS WITH FORKS



Rotation on Stabilizers with 3 Ton Capacity Winch



Rotation on Partial Stabilizers with 3 Ton Capacity Winch



Frontal Position on Tires with 3 Ton Capacity Winch

